

BLUEBOX GEN2 ADVANT Firmware Flash

BLUEBOX
RFid System

Preface

SOLTEC Soluzioni Tecnologiche S.r.l. (SOLTEC) reserves the right to make changes to its products or services or to discontinue any product or service at any time without notice. SOLTEC provides customer assistance in various technical areas, but does not have full access to data concerning the use and applications of customer's products. Therefore, SOLTEC assumes no liability and is not responsible for customer applications or product or software design or performance relating to systems or applications incorporating SOLTEC products. In addition, SOLTEC assumes no liability and is not responsible for infringement of patents and/or any other intellectual or industrial property rights of third parties, which may result from assistance provided by SOLTEC. SOLTEC products are not designed, intended, authorized or warranted to be suitable for life support applications or any other life critical applications that could involve potential risk of death, personal injury or severe property or environmental damage. With the edition of this document, all previous editions become void. Indications made in this manual may be changed without previous notice. Composition of the information in this manual has been done to the best of our knowledge. SOLTEC does not guarantee the correctness and completeness of the details given in this manual and may not be held liable for damages ensuing from incorrect or incomplete information. Since, despite all our efforts, errors may not be completely avoided, we are always grateful for your useful tips. The installation instructions given in this manual are based on advantageous boundary conditions. SOLTEC does not give any guarantee promise for perfect function in cross environments. The companies or products mentioned in this document might be brands or brand names of the different suppliers or their subsidiaries in any country. This document may be downloaded onto a computer, stored and duplicated as necessary to support the use of the related SOLTEC products. Any other type of duplication, circulation or storage on data carriers in any manner not authorized by SOLTEC represents a violation of the applicable copyright laws and shall be prosecuted.

Safety Instructions / Warning - Read before start-up!

- The device may only be used for the intended purpose designed by the manufacturer. The operation manual should be conveniently kept available at all times for each user.
- Unauthorized changes and the use of spare parts and additional devices that have not been sold or recommended by the manufacturer may cause fire, electric shocks or injuries. Such unauthorized measures shall exclude any liability by the manufacturer.

- The liability-prescriptions of the manufacturer in the issue valid at the time of purchase are valid for the device. The manufacturer shall not be held legally responsible for inaccuracies, errors, or omissions in the manual or automatically set parameters for a device or for an incorrect application of a device.
- Repairs may be executed by the manufacturer only.
- Only qualified personnel should carry out installation, operation, and maintenance procedures.
- Use of the device and its installation must be in accordance with national legal requirements and local electrical codes.
- When working on devices the valid safety regulations must be observed.

Reference table of the devices object of this manual:

Ordering Code	Frequency	Communication Interface	Antenna
5221L	LF	Serial	Internal
5222L	LF	Ethernet	Internal
5223L	LF	ProfiBus	Internal
5231L	LF	Serial	One External Channel
5232L	LF	Ethernet	One External Channel
5233L	LF	ProfiBus	One External Channel
5241L	LF	Serial	Dual External Channels
5242L	LF	Ethernet	Dual External Channels
5243L	LF	ProfiBus	Dual External Channels
5221H	HF	Serial	Internal
5222H	HF	Ethernet	Internal
5223H	HF	ProfiBus	Internal
5231H	HF	Serial	One External Channel

5232H	HF	Ethernet	One External Channel
5233H	HF	ProfiBus	One External Channel
5241H	HF	Serial	Dual External Channels
5242H	HF	Ethernet	Dual External Channels
5243H	HF	ProfiBus	Dual External Channels
5221U	UHF	Serial	Internal
5222U	UHF	Ethernet	Internal
5223U	UHF	ProfiBus	Internal
5237U	UHF	Serial	One External Channel
5238U	UHF	Ethernet	One External Channel
5239U	UHF	ProfiBus	One External Channel
5231U	UHF	Serial	Four External Channels
5232U	UHF	Ethernet	Four External Channels
5233U	UHF	ProfiBus	Four External Channels

Table of Contents

1 Introduction..... 7
2 BLUEBOX GEN2 ADVANT Firmware Flash via USB Port..... 8
3 Document Revision History11

Page intentionally left blank

1 Introduction

This document describes how to flash the firmware in the **BLUEBOX GEN2 ADVANT** readers until you cannot do it through the BLUEBOX Show software.

2 BLUEBOX GEN2 ADVANT Firmware Flash via USB Port

In order to flash the firmware into the BLUEBOX GEN2 ADVANT reader, power off the BLUEBOX, then set the dip switch SW1 position 1 on the main board to ON and close the jumper CON3 on the USB interface board (Figure 2-1). In case of serial interface reader disconnect the serial flat cable from the serial interface board.

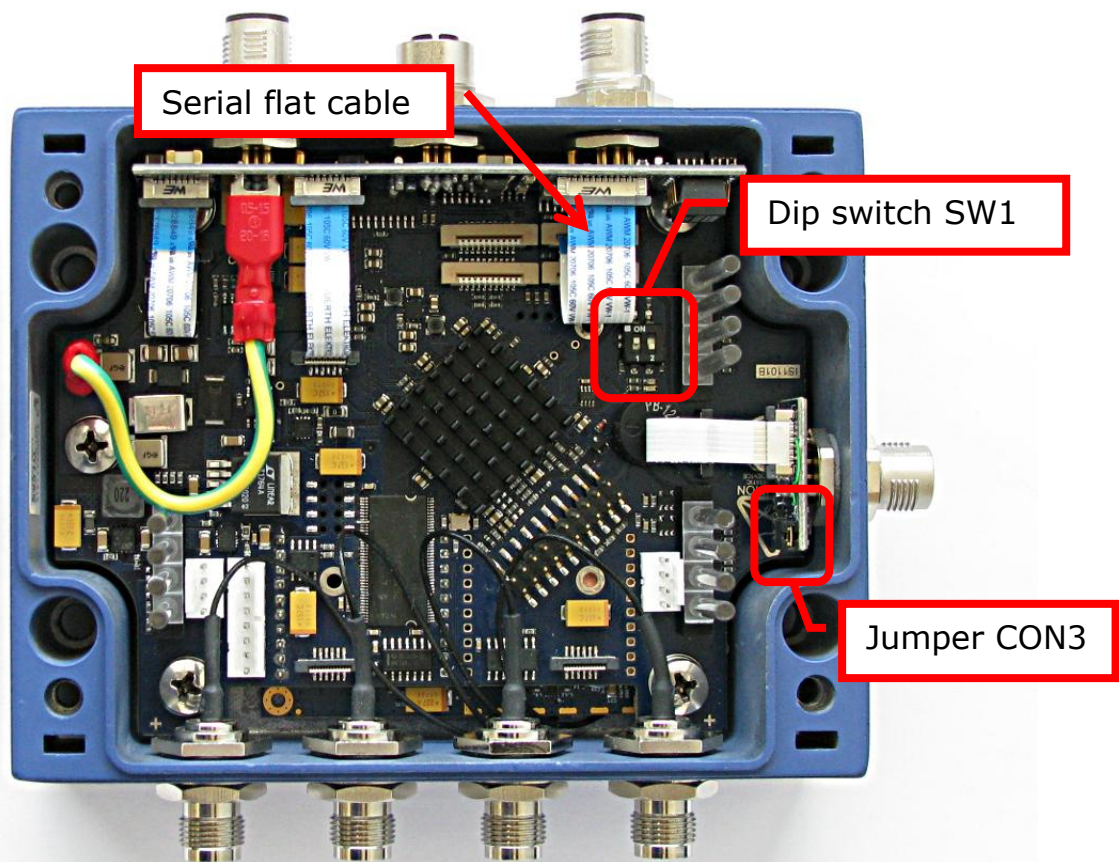


Figure 2-1 The BLUEBOX GEN2 ADVANT reader.

Then launch the Bootwizard 1.2.0.7 and select "Write to flash", then browse and select the "File to flash". Check the "User data", "Flash type" and "SDRAM type" settings which should be "0x00000040" as "User data", "Serial flash on SPI bus" as "Flash type" and "MT84LC2M32B2" as "SDRAM type" (Figure 2-2). Power on the BLUEBOX and connect it to a PC via the USB port, then click on "Detect" button and select the "romloader_usb_00000001" as interface to use and click on "Ok" (Figure 2-3), the "netx 100" chip should be detected (Figure 2-4).

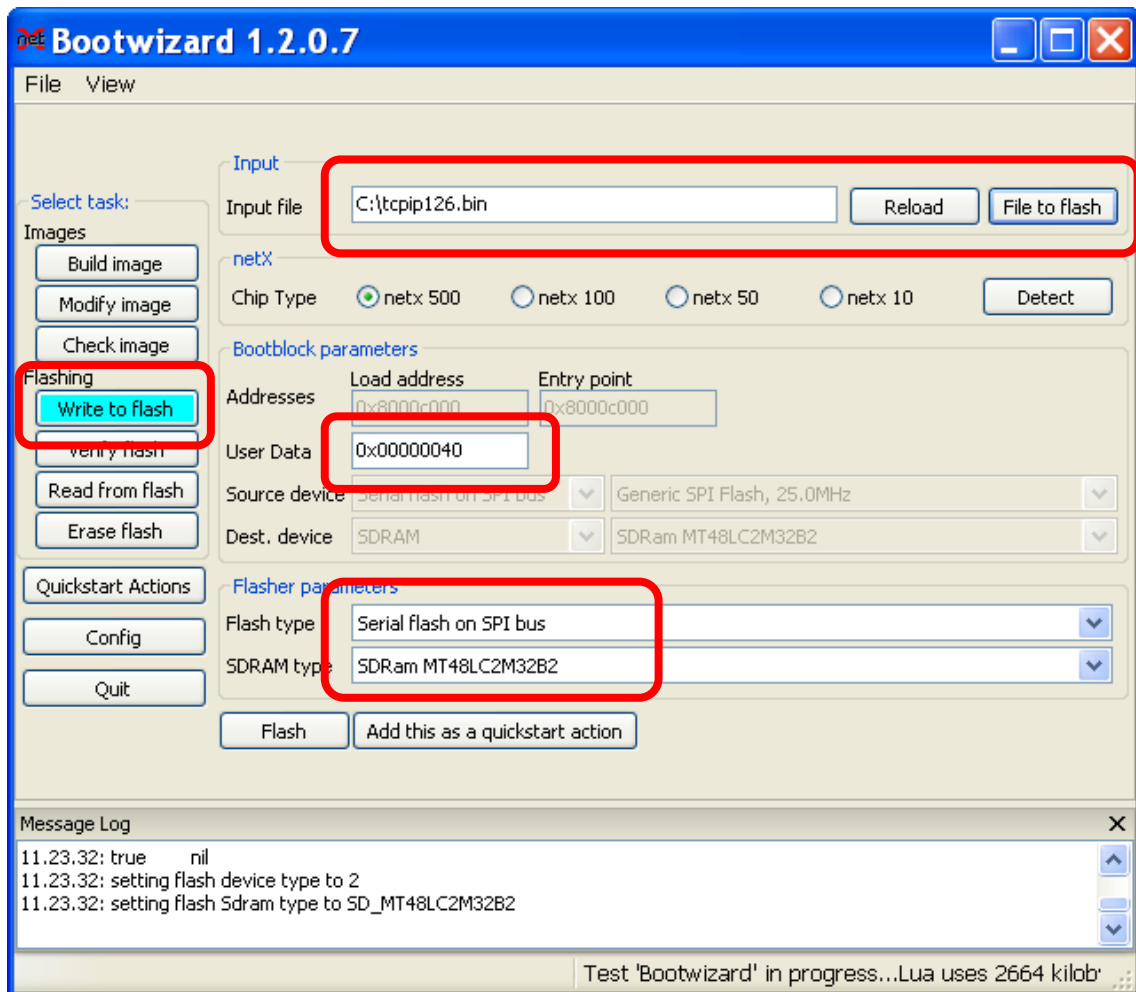


Figure 2-2 Bootwizard 1.2.0.7, select "Write to flash" and the "File to flash".

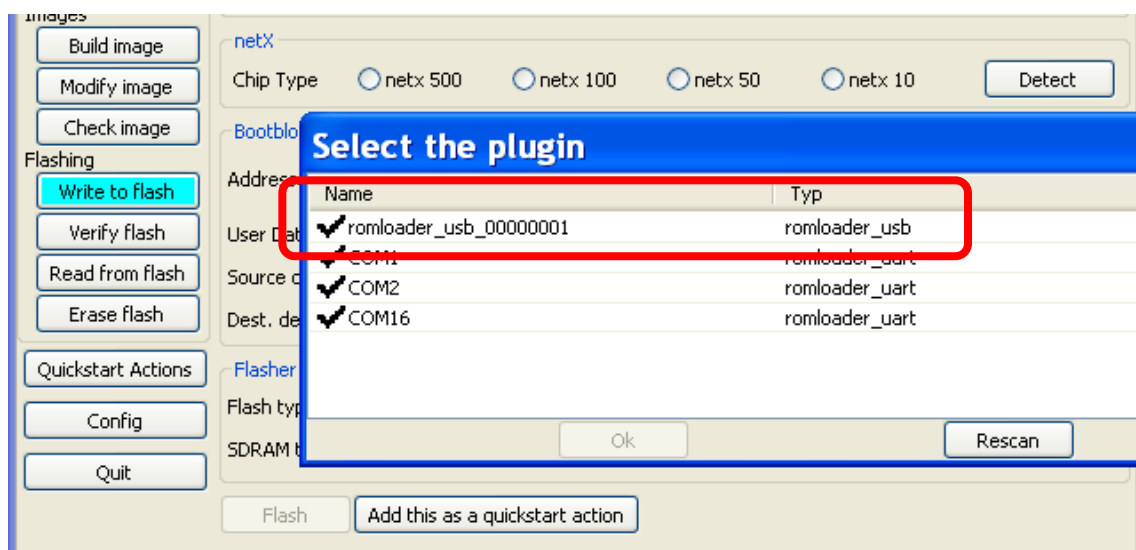


Figure 2-3 Bootwizard 1.2.0.7, select "romloader_usb_00000001" as interface to use to detect the chip.

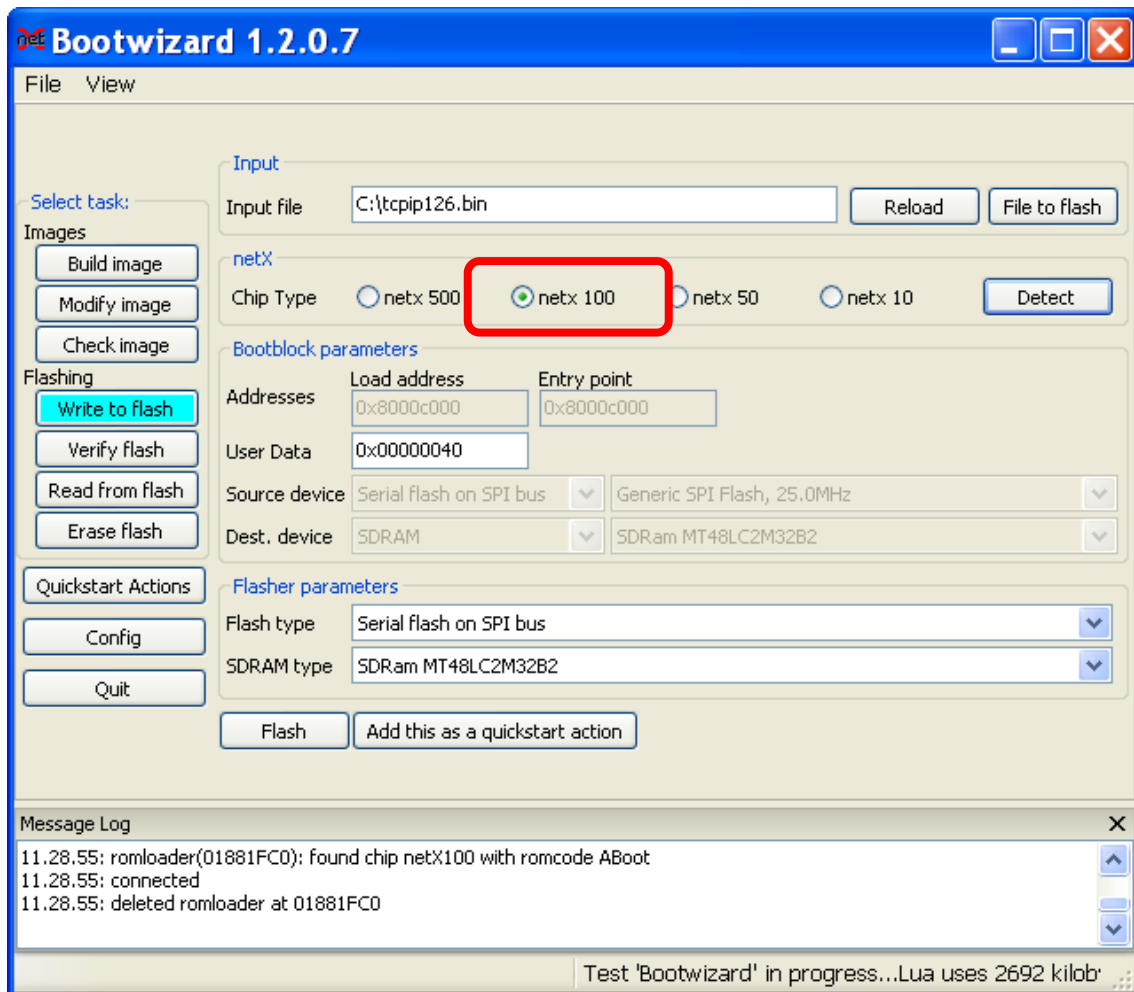


Figure 2-4 Bootwizard 1.2.0.7, chip type detected.

Click on "Flash" button to flash the firmware and wait the end of the operation. Then power off the reader, set the dip switch SW1 position 1 on the main board to OFF and open the jumper CON3 on the USB interface board (Figure 2-1). In case of serial interface reader reconnect the serial flat cable to the serial interface board.

3 Document Revision History

Date	Revision	Description
24/11/14	1.00	Initial release.