

## hterm 0.8.5

### Sending and Receiving Telegrams with Hexadecimal Values

iDTRONIC GmbH  
Donnersbergweg 1  
67059 Ludwigshafen  
Germany/Deutschland

Phone: +49 621 6690094-0  
Fax: +49 621 6690094-9  
E-Mail: [info@idtronic.de](mailto:info@idtronic.de)  
Web: [idtronic-rfid.com](http://idtronic-rfid.com)

Issue 0.4  
– 02. March 2020 –

Subject to alteration without prior notice.  
© Copyright iDTRONIC GmbH 2020  
Printed in Germany

## Contents

<b>1</b>	<b>Example: Send Command to Bluebox</b> .....	<b>4</b>
1.1	Factory Default Communication Settings .....	4
1.2	Procedure .....	4
1.3	Some Test Commands .....	4
<b>2</b>	<b>Example 2: Send Command to OEM-DESFire Devices</b> .....	<b>5</b>
2.1	Factory Default Communication Settings .....	5
2.2	Procedure .....	5
<b>3</b>	<b>Copy Data to Clipboard</b> .....	<b>6</b>
<b>4</b>	<b>Automatically Send Telegrams</b> .....	<b>7</b>
	<b>Table of Figures</b> .....	<b>7</b>

# 1 Example: Send Command to Bluebox

## 1.1 Factory Default Communication Settings

- 19200 Baud
- 8 Databits
- 1 Stopbit
- No Parity

## 1.2 Procedure

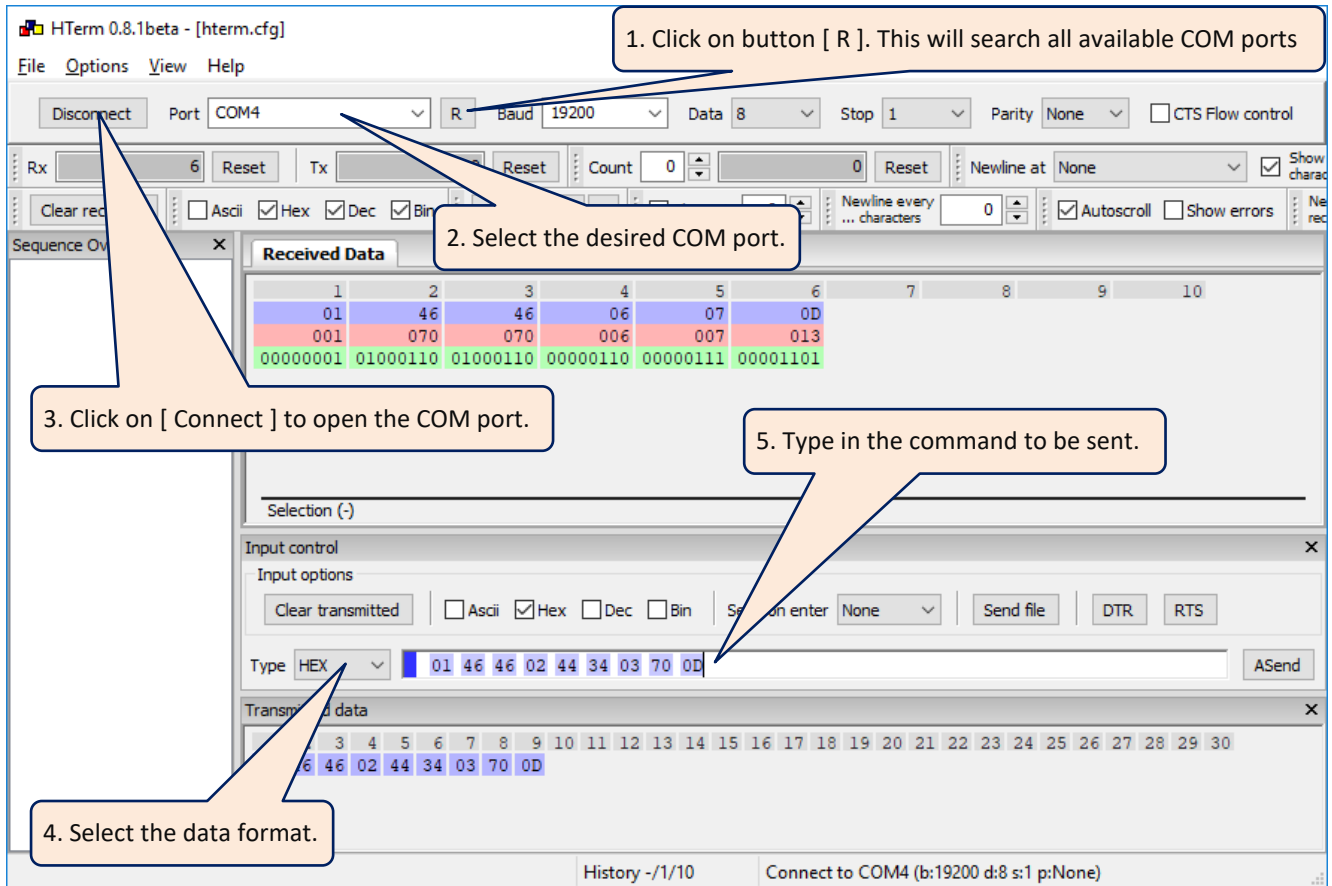


Figure 1 Example with Bluebox

[ Enter ] will send the command once. So send a command several times or repeat it endlessly see in the following.

The sent data is copied to the window "Transmit data".

Received data will be shown in the window "Received data".

## 1.3 Some Test Commands

Request Firmware Version:	01 46 46 02 33 34 03 07 0D	Reply contains FW string.
Reset Device:	01 46 46 02 33 30 03 03 0D	Reply: 01 46 46 06 07 0D
Set to Factory Defaults:	01 46 46 02 33 31 03 02 0D	Reply: 01 46 46 06 07 0D
RF Deactivation:	01 46 46 02 33 38 03 0B 0D	
RF Activation:	01 46 46 02 33 39 03 0A 0D	

Reply: 01 46 46 06 07 0D (Success, ACK) or 01 46 46 15 14 0D (Error, NACK)

## 2 Example 2: Send Command to OEM-DESFire Devices

### 2.1 Factory Default Communication Settings

- 115200 Baud
- 8 Databits
- 1 Stopbit
- No Parity

### 2.2 Procedure

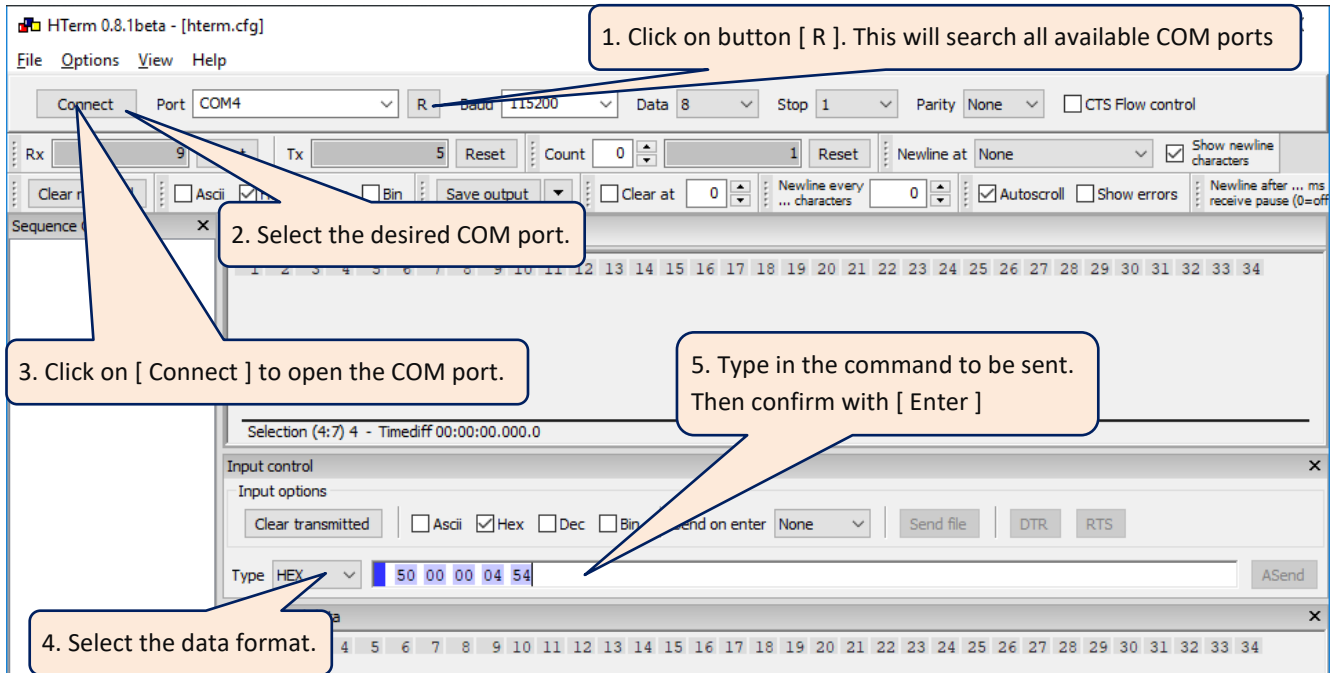


Figure 2 Example with OEM-DESFire Series, send telegramm

### Result

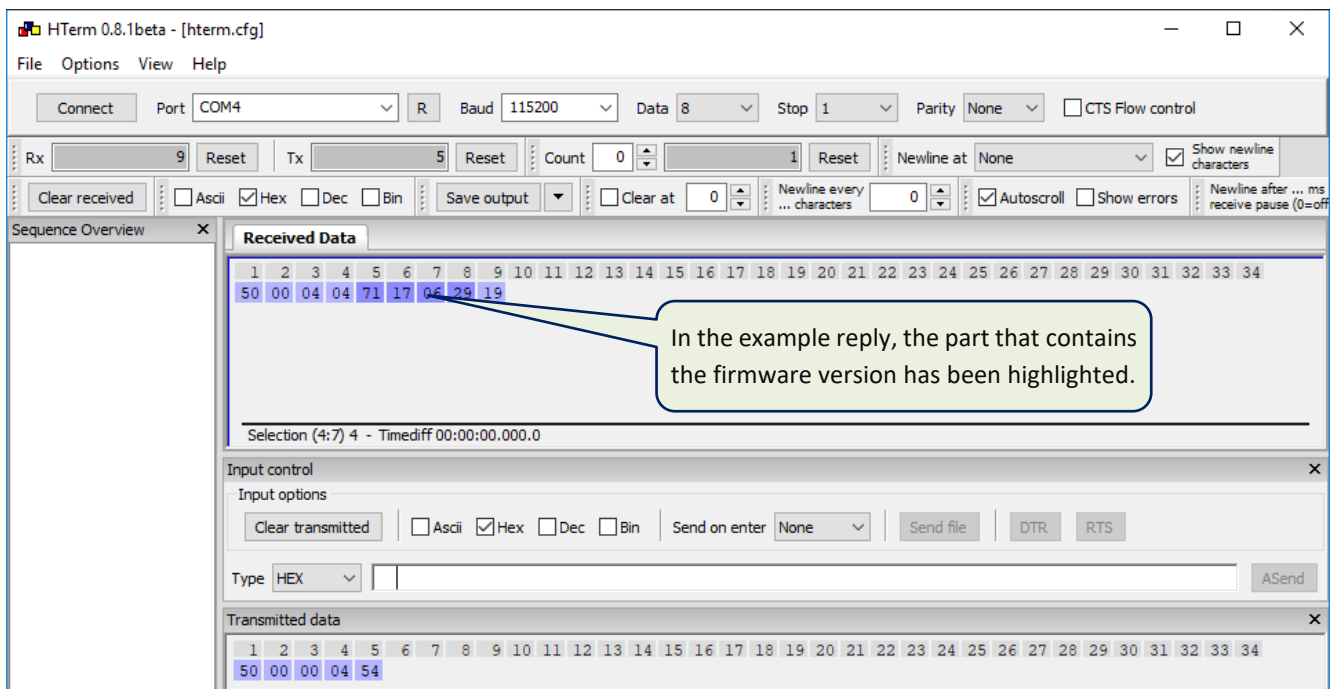


Figure 3 Example with OEM-DESFire Series, receive telegramm



### 4 Automatically Send Telegrams

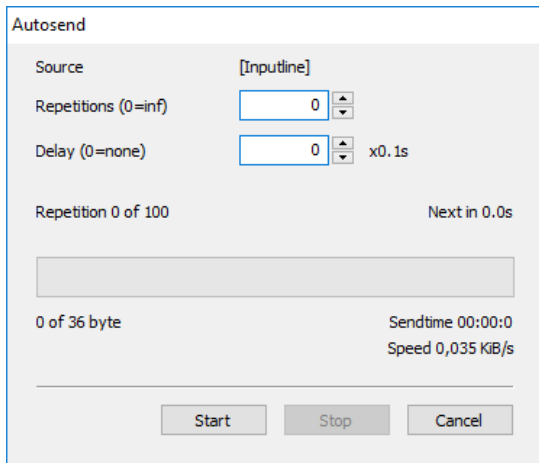


Figure 7 Example for infinite repetitions

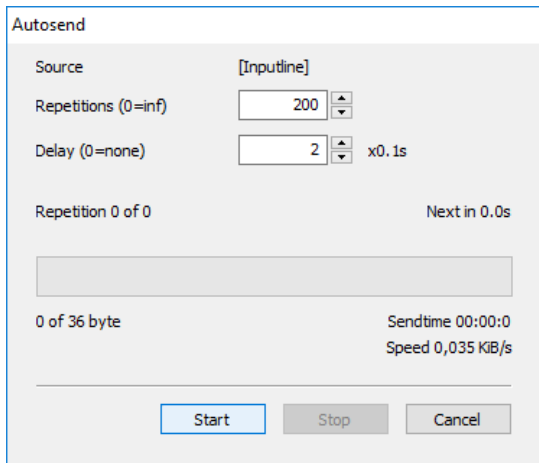


Figure 8 Example for 100 repetitions with a pause of 200 ms

### Table of Figures

Figure 1	Example with Bluebox .....	4
Figure 2	Example with OEM-DESFire Series, send telegramm .....	5
Figure 3	Example with OEM-DESFire Series, receive telegramm .....	5
Figure 4	Copy step 1 .....	6
Figure 5	Copy step 2 .....	6
Figure 6	Copy step 3 .....	6
Figure 7	Example for infinite repetitions.....	7
Figure 8	Example for 100 repetitions with a pause of 200 ms .....	7